



# LiquiSonic® Lab Controller

Article no. 21001353

The LiquiSonic® Lab controller is especially used in laboratories, miniplants or as mobile device in process plants.

The electronics of the controller and sensor are integrated in the housing, to which a laboratory sensor is connected. This lab sensor can be made of various materials depending on the application.

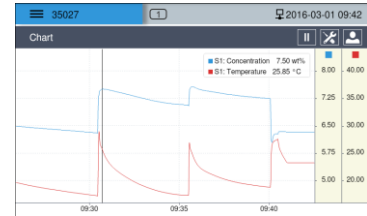
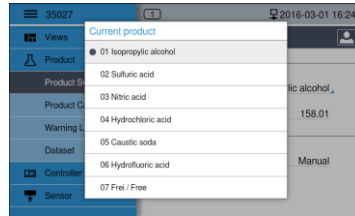
The controller processes the sensor data and is the interface to the operator by displaying the concentration values. Being equipped with a high-tech microprocessor, the controller even copes with complex concentration calculations.

The clear, user-friendly and multi-lingual menu structure allows the intuitive system operation without extensive manual study.

The internal data memory has a capacity of up to 30,000 records. By reading out via the integrated TCP/IP or RS-232 interface, it is possible to create easily own process reports. The process data or limit values will be updated every second.

# Features

- transportable and space-saving
- simple parameterization
- automatic self-monitoring
- management of up to 32 products (256 optional)
- long-term memory of measuring results
- clear and extensive trend charts
- different sensors available in material and design



# Specifications

## Electrical data

power supply	100-240 V AC, 50-60 Hz
power consumption	230 V AC: typ. 25 W
EMC	compliance with directive 2014/30/EU
electrical security	compliance with directive 2014/30/EU

## Data interfaces

standard interface	RS-232 Ethernet (optional) USB 3.0
Fieldbus (optional)	PROFINET MODBUS TCP

## Housing

dimensions	315 x 170 x 295 mm (width x height x depth)
material	front panel: anodized Aluminium display protection: glass
weight	approx. 5.5 kg
ambient temperature range	0 °C to 40 °C (30 °F to 100 °F)

## User interface

display	TFT color display diagonal 7" (17.8 cm) 800 x 480 pixel resolution with LED backlight
operation	Touchscreen, remote via Browser

**SensoTech GmbH**  
Steinfeldstraße 1  
39179 Magdeburg-Barleben  
Deutschland  
+49 39203 514 100  
info@sensotech.com  
www.sensotech.com

**SensoTech Inc.**  
69 Montgomery Street, Unit 13218  
Jersey City, NJ 07303  
USA  
+1 973 832 4575  
sales-usa@sensotech.com  
www.sensotech.com

**SensoTech (Shanghai) Co., Ltd.**  
Room 609, Bldg.1, No.778, Jingji Road.  
Pilot Free Trade Zone, 201206 Shanghai  
China  
+86 21 6485 5861  
sales-china@sensotech.com  
www.sensotechchina.com